



**SUPPORT RESEARCH, CHANGE LIVES.**  
PARTNERING WITH JOHNS HOPKINS UNIVERSITY

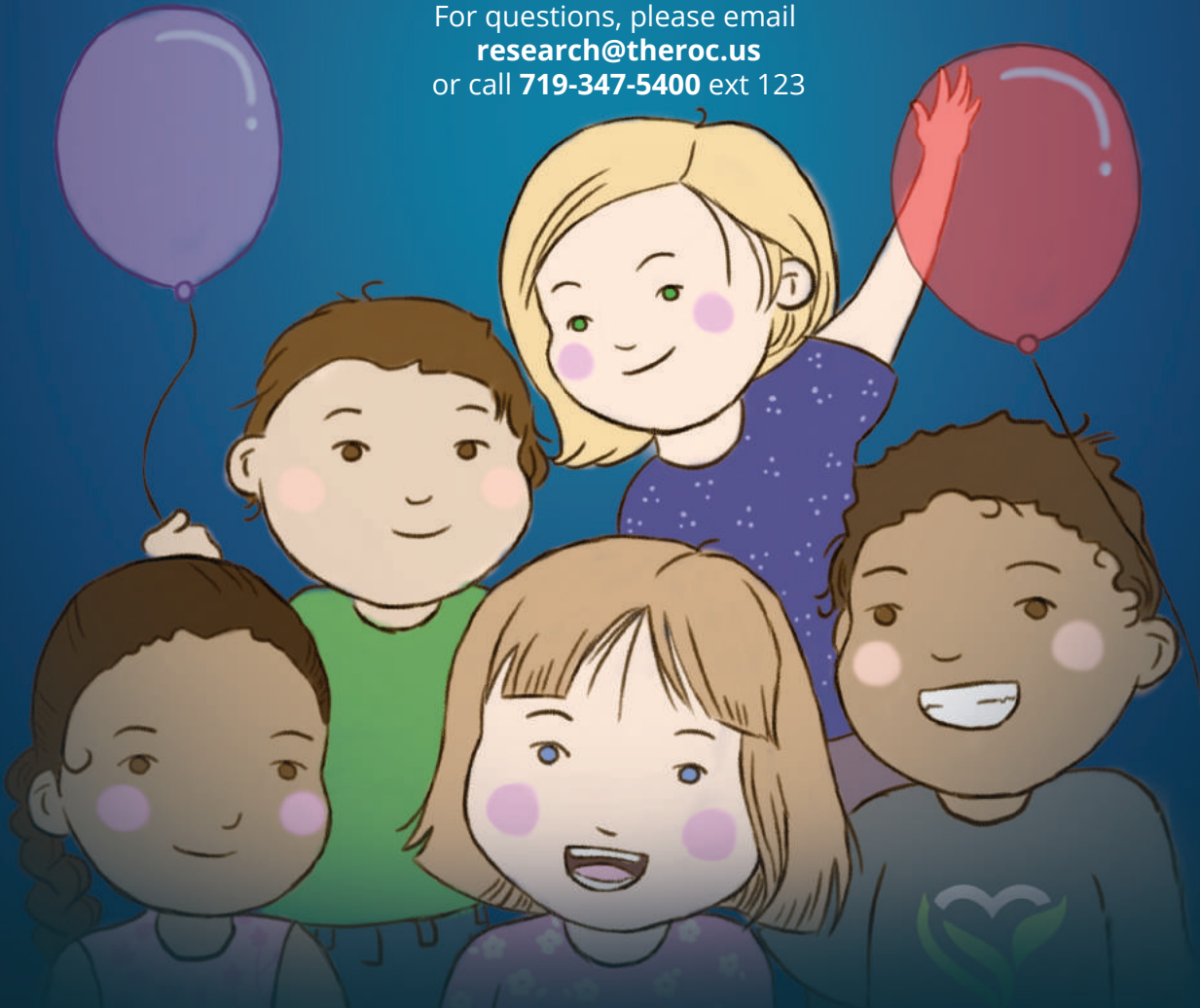
Research is one of our primary objectives at Realm of Caring. That's why we've partnered with experienced researchers at the Johns Hopkins University School of Medicine to update our successful Observational Research Registry (ORR), which now captures information on those using cannabinoids for Epilepsy, Cancer, Autoimmune Disorders, Neurological Disorders, Neuropsychiatric Disorders, Behavioral Disorders, and Chronic Pain, among other conditions. **Whether you are currently using cannabinoid therapies or not**, by enrolling and providing your input you will be participating in invaluable research to other families, doctors, and researchers.

To learn more and enroll, log on to [www.THEROC.us/ORR](http://www.THEROC.us/ORR)

For questions, please email

[research@theroc.us](mailto:research@theroc.us)

or call **719-347-5400** ext 123



W W W . T H E R O C . U S