

# Stable dose cannabinoid medicine (Sativex®<sup>®</sup>, THC+CBD) can provide sustained efficacy in the treatment of refractory painful diabetic neuropathy or other peripheral neuropathic pain associated with allodynia.



Ratcliffe S<sup>1</sup>, Serpell MG<sup>2</sup>, Hoggart B<sup>3</sup>, Simpson K<sup>4</sup>

<sup>1</sup>MAC UK Neuroscience Ltd., Blackpool, UK; <sup>2</sup>Gartnavel General Hospital, Glasgow, UK; <sup>3</sup>Solihull Hospital, Solihull, UK; <sup>4</sup>Seacroft Hospital, Leeds, UK.



## » BACKGROUND

### Neuropathic Pain (NP) poses a major challenge:

- Most common long-term complication of diabetes mellitus
- Leads to great morbidity and mortality
- Results in a huge economic burden for diabetes care
- Can be a disabling and painful symptom
- Existing treatments afford only partial relief and have unpleasant side-effects

### Study drug: Sativex® (THC:CBD) endocannabinoid system modulator

- Approved in Canada for relief of central neuropathic pain in Multiple Sclerosis and cancer pain
- Produced from selected strains of cloned Cannabis sativa plants formulated into a spray for oromucosal administration
- Highly standardised formulation: each 100µl spray of Sativex® contains 2.7 mg delta-9-tetrahydrocannabinol (THC), 2.5 mg cannabidiol (CBD), minor cannabinoids (5-6%) and small amounts of other plant extracts such as terpenes
- Subjects self-titrated to their optimal dose on the basis of their individual efficacy and tolerability response, up to a maximum of 24 sprays/day

### Rationale for Treatment:

- Previous clinical trials have shown that Sativex has analgesic properties that are effective in relieving neuropathic pain
- These studies also suggested that Sativex is well tolerated and may also improve sleep and quality of life
- Pain resulting from diabetic neuropathy is often not satisfactorily alleviated by existing therapies

## » METHODS

### Study Design:

- 38-week open label, follow-on study

### Study Objectives:

- To evaluate maintenance of effect and development of tolerance through exposure to, and safety of open label Sativex therapy in subjects with peripheral neuropathic pain (PNP)

### Study Population:

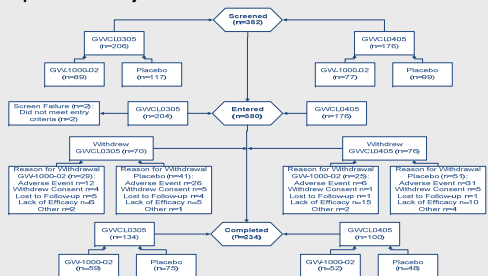
- 380 subjects who had participated in one of two 3-month (GWCL0305 and GWCL0405), double blind, randomised controlled clinical trials (parent RCT) designed to investigate the role of Sativex in the treatment of PNP secondary to diabetes or associated with allodynia

### Assessments:

- Primary endpoint was pain severity scores recorded using a 0-10 Numerical Rating Scale (NRS-11)
- Secondary endpoints included the Neuropathic Pain Scale (NPS), sleep disturbance NRS-11, Subject Global Impression of Change (SGIC), intoxication NRS-11 and a quality of life EQ-5D health questionnaire
- Safety was assessed by monitoring adverse events (AEs) and serial clinical chemistry and vital signs

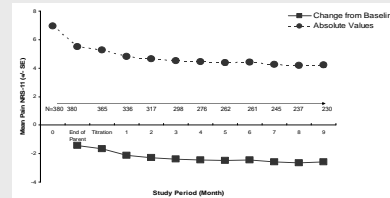
## » RESULTS

### 1. Disposition of Subjects



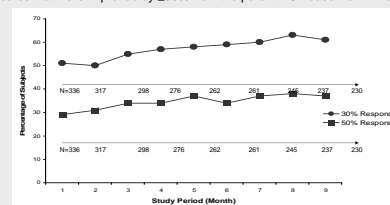
### 3. Mean NRS Pain Scores

There was an improvement over the initial weeks of treatment and subsequent maintenance of benefit.



### 4. Responders at the 30% and 50% Level of Improvement

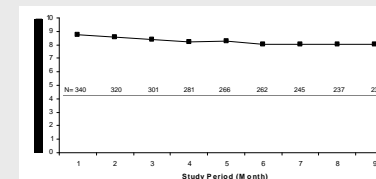
After 9 months of open label Sativex treatment, 141 (61%) completing subjects reported pain scores that were improved by ≥30% from the parent RCT baseline 12 months earlier



### 2. Baseline Subject Characteristics

		No. of Subjects (%) (n=380)
Gender	Male	200 (53%)
	Female	180 (47%)
Ethnic Origin	White/Caucasian	374 (98%)
	Other	6 (2%)
	Previous Cannabis Use (at any time, prior to parent RCTs)	38 (10%)
<b>Mean (SD)</b>		
Age (years)		57.8 (12.03)
BMI (kg/m <sup>2</sup> )		29.9 (6.76)
Duration of Any Underlying Condition Causing PNP (years)		9.63 (8.45)
Duration of PNP (years)		5.35 (5.30)

### 5. Dosing Data



### 6. Secondary Endpoints

#### NPS and Sleep Quality NRS-11

- Improvement maintained with time and continued to improve up to week 26 (change from parent RCT baseline was -21.51 for the NPS and -2.39 for the sleep NRS-11)

#### SGIC

- 70% of subjects had an improvement in nerve pain
- 8% of subjects had a worsening in nerve pain

#### Health Outcomes – EQ-5D Questionnaire Score

- Descriptive System Questionnaires (Mobility, Activity, Self care, Pain and Anxiety):
  - More subjects improved than worsened in their classification from parent RCT baseline
- Weighted Health State Index and Health Status VAS:
  - Small improvement in both index and VAS scores, maintained at final visit

#### Intoxication Scores

- Mean intoxication scores throughout course of study were less than 2 points out of 10

### 7. Safety

#### Common adverse events (occurring in 5% or more subjects)

System Organ Class Preferred Term	All-Causality Number (Percentage) of Subjects	Treatment-Related Number (Percentage) of Subjects
<b>Total subjects with at least one AE</b>	<b>295 (78%)</b>	<b>224 (59%)</b>
<b>Nervous System Disorders</b>	<b>168 (44%)</b>	<b>140 (37%)</b>
	Dizziness 29 (8%)	24 (6%)
	Dysgeusia 28 (8%)	28 (8%)
	Somnolence 28 (7%)	27 (7%)
	Headache 23 (8%)	11 (3%)
<b>Gastrointestinal Disorders</b>	<b>135 (36%)</b>	<b>97 (26%)</b>
	Nausea 42 (11%)	35 (9%)
	Dry Mouth 30 (8%)	29 (8%)
	Vomiting 25 (7%)	11 (3%)
<b>General Disorders and Administration Site Conditions</b>	<b>92 (24%)</b>	<b>69 (18%)</b>
	Fatigue 31 (8%)	27 (7%)
	Feeling Drunk 21 (6%)	21 (6%)
<b>Psychiatric Disorders</b>	<b>79 (21%)</b>	<b>55 (14%)</b>
	Disorientation 19 (5%)	18 (5%)

- 295 subjects reported at least 1 treatment-emergent AE; 224 subjects (59%) were related
- 88 subjects (23%) reported at least 1 AE leading to permanent cessation of study medication.
- Severe AEs affected 87 subjects (23%).
- 40 subjects (11%) reported at least one SAE; 4 subjects (1%) were related:
  - 2 subjects experienced amnesia, 1 resolved following discontinuation of Sativex and 1 was still ongoing at last visit; 1 subject experienced paranoia which resolved following discontinuation of Sativex; 1 suicide attempt occurred 26 days after last dose.
- 2 fatal non-related AEs occurred.

## » CONCLUSION

- Sativex remained well tolerated and beneficial for the majority of subjects with peripheral neuropathic pain secondary to diabetes or associated with allodynia over nine months.
- Maintenance in pain relief was achieved without an increase in dose of Sativex.
- The study raised no new safety concerns for Sativex.